

# InDip™ 550 immersion housings

for pH/redox, conductivity, dissolved oxygen and turbidity measurement

## Technical Data

---



InDip 550

### Short description

The new immersion housings of METTLER TOLEDO serve as an enclosure for our electrodes and sensors, and are specially designed and developed to suit applications in wastewater treatment. A solution ground permits grounding or the use of the Sensocheck® in the transmitter. The housings are available in PVC or PVDF.

- easy installation
- adapter for Pg13.5, 1" NPT, 1" NPT Cond, and 3/4" NPT
- with solution grounding
- InDip 550 IND for inductive conductivity sensors

### Contents

Specifications	2
Ordering information	2
Accessories / Flanges, Electrode holders	2
Ordering information	3
Drawings	3

**METTLER TOLEDO**

## Specifications

Type	InDip™ 550	
Immersion length (H)	1000, 1500, 2000, 2500, 3000mm, others on request	
Pressure range	ambient	
Temperature range	0...60 °C (PVC) 0...100 °C (PVDF)	
Material	PVC, SS, DIN 1.4435 (solution grounding), O-rings Viton® PVDF, HA-C22 (solution grounding), O-rings Viton®	
Sensor interface	Ø 12mm, a=120mm, Pg13.5 1" NPT (e.g. InPro® 4500) 1" NPT Cond (e.g. InPro 7108-VP/CPVC) IND (e.g. InPro 7200 Series) ¾" NPT (e.g. InPro® 7000-VP)	
Protective cage	Standard:	with solution grounding, no protective cage
	Type GP:	with protective cage, with solution grounding
	Type P:	with protective cage, no solution grounding

## Ordering information

Accessories / Flanges*	Order No.
PVC DIN PN10-DN40	52 400 309
PVC DIN PN10-DN50	52 401 893
PVC DIN PN10-DN80	52 401 228
PVC DIN PN10-DN100	52 400 954
PVDF DIN PN10-DN40	52 400 774
PVDF DIN PN10-DN50	52 401 110
PVDF DIN PN10-DN100	52 400 858
Tube clamp 50 mm (PE)	52 400 775

\*have to be ordered separately

Electrode holders	Order No.
O-ring set for electrode holder Viton®	52 400 319
PVC electrode holder Pg 13.5	52 400 622
PVDF electrode holder Pg 13.5	52 400 623
PVC electrode holder Pg 13.5 P	52 401 334
PVDF electrode holder Pg 13.5 P	52 401 335
PVC electrode holder Pg 13.5 GP	52 401 332
PVDF electrode holder Pg 13.5 GP	52 401 333
PVC electrode holder ¾" NPT	52 400 624
PVDF electrode holder ¾" NPT	52 400 625
PVC electrode holder 1" NPT	52 400 626
PVDF electrode holder 1" NPT	52 400 627
PVC electrode holder 1" NPT Cond	52 402 872
kit InDip 550 Ind PVC (sensor holder)	52 403 579
kit InDip 550 Ind PVDF (sensor holder)	52 403 580

Assembly and shipment costs of complete housings are high in relation to the price. To be more competitive, we offer a modular system. Locally supplied immersion tubes are equipped by the customer with top and bottom parts bought from MMETTLER TOLEDO. The InDip-Set550 contains the main top and bottom parts. Additionally you require an electrode or sensor holder. A mounting instruction for the local sourced tube is included in the package.

InDip-Set 550 PVC	52 400 659
InDip-Set 550 PVDF	52 400 660

Ordering information

When ordering, the following data should be given:

Type

**InDip 550/InDip 550 IND**

**Immersion length H (mm)**

1000/1500/2000/2500/3000

**Material**

PVC

PVDF

**Sensor interface**

Pg13.5 (with protective cage P or GP available)

3/4" NPT

1" NPT/1" NPT Cond

IND (for InPro 7200)

**Protective cage (Pg13.5)**

without marking (=standard)

P

GP

**E.g.:** InDip 550  
 InDip 550  
 InDip 550

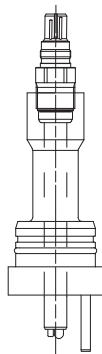
1000  
 1500  
 2000

PVC  
 PVDF  
 PVC

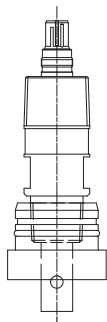
1" NPT  
 Pg13.5  
 Pg13.5

GP

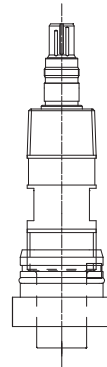
Drawings



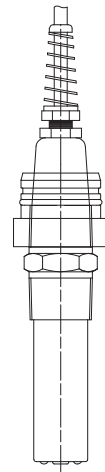
Pg 13.5



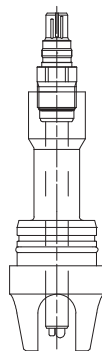
3/4" NPT



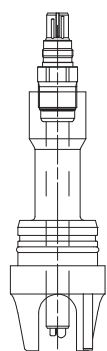
1" NPT Cond



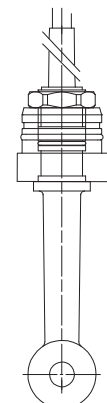
1" NPT



Pg 13.5/P



Pg 13.5/GP



IND

## Sales and Service:

### Australia

Mettler-Toledo Ltd.  
220 Turner Street  
Port Melbourne  
AUS-3207 Melbourne/VIC  
Phone +61 1300 659 761  
Fax +61 3 9645 3935  
e-mail info.mtaus@mt.com

### Austria

Mettler-Toledo Ges.m.b.H.  
Südrandstraße 17  
A-1230 Wien  
Phone +43 1 604 19 80  
Fax +43 1 604 28 80  
e-mail infoprocess.mtat@mt.com

### Brazil

Mettler-Toledo Ind. e Com. Ltda.  
Alameda Araguaia, 451  
Alphaville  
BR-06455-000 Barueri/SP  
Phone +55 11 4166 7444  
Fax +55 11 4166 7401  
e-mail mettler@mettler.com.br  
service@mettler.com.br

### China

Mettler-Toledo Instruments  
(Shanghai) Co. Ltd.  
589 Gui Ping Road  
Cao He Jing  
CN-200233 Shanghai  
Phone +86 21 64 85 04 35  
Fax +86 21 64 85 33 51  
e-mail mtcs@public.sta.net.cn

### Croatia

Mettler-Toledo d.o.o.  
Mandlova 3  
HR-10000 Zagreb  
Phone +385 1 292 06 33  
Fax +385 1 295 81 40  
e-mail mf.zagreb@mt.com

### Czech Republic

Mettler-Toledo s.r.o.  
Trebohosticka 2283/2  
CZ-100 00 Praha 10  
Phone +420 2 72 123 150  
Fax +420 2 72 123 170  
e-mail sales.mtcz@mt.com

### Denmark

Mettler-Toledo A/S  
Naverland 8  
DK-2600 Glostrup  
Phone +45 43 27 08 00  
Fax +45 43 27 08 28  
e-mail info.mtdk@mt.com

### France

Mettler-Toledo  
Analyse Industrielle S.A.S.  
30, Boulevard de Douaumont  
BP 949  
F-75829 Paris Cedex 17  
Phone +33 1 47 37 06 00  
Fax +33 1 47 37 46 26  
e-mail mtpro-f@mt.com

### Germany

Mettler-Toledo GmbH  
Prozeßanalytik  
Ockerweg 3  
D-35396 Gießen  
Phone +49 641 507 333  
Fax +49 641 507 397  
e-mail prozess@mt.com

### Great Britain

Mettler-Toledo LTD  
64 Boston Road, Beaumont Leys  
GB-Leicester LE4 1AW  
Phone +44 116 235 7070  
Fax +44 116 236 5500  
e-mail enquire.mtuk@mt.com

### Hungary

Mettler-Toledo Kereskedelmi KFT  
Teve u. 41  
HU-1139 Budapest  
Phone +36 1 288 40 40  
Fax +36 1 288 40 50  
e-mail mthu@axelero.hu

### India

Mettler-Toledo India Private Limited  
Amar Hill, Saki Vihar Road  
Powai  
IN-400 072 Mumbai  
Phone +91 22 2857 0808  
Fax +91 22 2857 5071  
e-mail sales.mtin@mt.com

### Italy

Mettler-Toledo S.p.A.  
Via Vialba 42  
I-20026 Novate Milanese  
Phone +39 02 333 321  
Fax +39 02 356 2973  
e-mail customercare.italia@mt.com

### Japan

Mettler-Toledo K.K.  
Process Division  
6F Ikenohata Nisshoku Bldg.  
2-9-7, Ikenohata  
Taito-ku  
JP-110-0008 Tokyo  
Tel. +81 3 5815 5606  
Fax +81 3 5815 5626  
e-mail helpdesk.ing.jp@mt.com

### Malaysia

Mettler-Toledo (M) Sdn Bhd  
Bangunan Electroscon Holding, U 1-01  
Lot 8 Jalan Astaka U8/84  
Seksyen U8, Bukit Jelutong  
MY-40150 Shah Alam Selangor  
Phone +60 3 78 44 58 88  
Fax +60 3 78 45 87 73  
e-mail  
MT-MY.CustomerSupport@mt.com

### Mexico

Mettler-Toledo S.A. de C.V.  
Ejercito Nacional #340  
Col. Chapultepec Morales  
Del. Miguel Hidalgo  
MX-11570 México D.F.  
Tel. +52 55 1946 0900  
e-mail ventas.lab@mt.com

### Poland

Mettler-Toledo (Poland) Sp.z.o.o.  
ul. Polezki 21  
PL-02-822 Warszawa  
Phone +48 22 545 06 80  
Fax +48 22 545 06 88  
e-mail polska@mt.com

### Russia

Mettler-Toledo Vostok ZAO  
Sretenskij Bulvar 6/1  
Office 6  
RU-101000 Moscow  
Phone +7 495 621 56 66  
Fax +7 495 621 63 53  
e-mail inforus@mt.com

### Singapore

Mettler-Toledo (S) Pte. Ltd.  
Block 28  
Ayer Rajah Crescent #05-01  
SG-139959 Singapore  
Phone +65 6890 00 11  
Fax +65 6890 00 12  
+65 6890 00 13  
e-mail precision@mt.com

### Slovakia

Mettler-Toledo s.r.o.  
Hattalova 12/A  
SK-831 03 Bratislava  
Phone +421 2 4444 12 20-2  
Fax +421 2 4444 12 23  
e-mail predaj@mt.com

### Slovenia

Mettler-Toledo d.o.o.  
Pot heroja Trtnika 26  
SI-1261 Ljubljana-Dobrunje  
Phone +386 1 530 80 50  
Fax +386 1 562 17 89  
e-mail keith.racman@mt.com

### South Korea

Mettler-Toledo (Korea) Ltd.  
Yeil Building 1 & 2 F  
124-5, YangJe-Dong  
SeCho-Ku  
KR-137-130 Seoul  
Phone +82 2 3498 3500  
Fax +82 2 3498 3555  
e-mail Sales\_MTKR@mt.com

### Spain

Mettler-Toledo S.A.E.  
C/Miguel Hernández, 69-71  
ES-08908 L'Hospitalet de Llobregat  
(Barcelona)  
Phone +34 93 223 76 00  
Fax +34 93 223 76 01  
e-mail bcn.centralita@mt.com

### Sweden

Mettler-Toledo AB  
Virkesvägen 10  
Box 92161  
SE-12008 Stockholm  
Phone +46 8 702 50 00  
Fax +46 8 642 45 62  
e-mail sales.mts@mt.com

### Switzerland

Mettler-Toledo (Schweiz) GmbH  
Im Langacher  
Postfach  
CH-8606 Greifensee  
Phone +41 44 944 45 45  
Fax +41 44 944 45 10  
e-mail salesola.ch@mt.com

### Thailand

Mettler-Toledo (Thailand) Ltd.  
272 Soi Soonvijai 4  
Rama 9 Rd., Bangkok  
Huay Kwang  
TH-10320 Bangkok  
Phone +66 2 723 03 00  
Fax +66 2 719 64 79  
e-mail  
MT-TH.ProcessSupport@mt.com

### USA/Canada

Mettler-Toledo Ingold, Inc.  
36 Middlesex Turnpike  
Bedford, MA 01730, USA  
Phone +1 781 301 8800  
Freephone +1 800 352 8763  
Fax +1 781 271 0681  
e-mail mtprous@mt.com



Management System  
certified according to  
ISO 9001 / ISO 14001

Subject to technical changes.  
© Mettler-Toledo AG 05/10  
Printed in Switzerland 52 400 743

Mettler-Toledo AG, Process Analytics  
Im Hackacker 15, CH-8902 Urdorf  
Phone +41 44 729 62 11, Fax +41 44 729 66 36

[www.mt.com/pro](http://www.mt.com/pro)