

ControlAir

Precision Pneumatic and Electropneumatic Controls

Current-to-Pressure (I/P) Transducers
Voltage-to-Pressure (E/P) Transducers
Pressure-to-Current (P/I) Transducers
Precision Air Pressure Regulators
Filter Regulators
Volume Boosters
Snap Acting Relays & Bias Relays
Motorized Regulators
Liquid Level Systems
Friction-free Diaphragm Air Cylinders
Custom Engineered Devices



Type 100

Multi-stage regulator provides the highest level of regulation accuracy and repeatability available. Output pressure is controlled to within 0.1% of full range.

- ▲ Insensitive to changes in supply pressure and flow
- ▲ Able to hold set pressure over long periods of time
- ▲ High relief capacity, plunger operated, manifold mounted, and low range models are available
- ▲ Compact size



Precision Air Pressure Regulator

Flow Capacity SCFM (NI/min)	14 (420)
Exhaust Capacity SCFM (NI/min)	3 (90)
Sensitivity Inch wc (mm)	0.125 (3.2)
Supply Pressure Max PSIG (BAR)	150 (10)
Approximate Size (inches)	2.0 x 2.06 x 4.26
Approximate Size (mm)	52 x 52 x 108

Range PSIG (BAR)	Port Size NPT	Model#
2-40 (0.14-2.7)	1/8	100-AA
	1/4	100-BA
	3/8	100-CA
2-60 (0.14-4)	1/8	100-AB
	1/4	100-BB
2-120 (0.14-8)	3/8	100CB
	1/8	100-AC
	1/4	100-BC
	3/8	100-CC

Type 100M

Designed to provide precise pneumatic control by using an electrical control.



Motorized Precision Air Pressure Regulator

- ▲ Ideal for control from a remote location
- ▲ Regulation accuracy and sensitivity of the Type 100
- ▲ Maintains set output pressure in the event of a power failure
- ▲ Compact size

Type 300

Designed to provide clean, accurate air pressure to instruments, valves, and other control equipment. Durable materials of construction in combination with an epoxy paint finish provide long lasting corrosion resistance in harsh industrial environments.

- ▲ Provides constant control of pressure under variable flow rates and supply pressures
- ▲ High capacity, long lasting depth filter
- ▲ Epoxy finish is standard
- ▲ Low droop
- ▲ Through body mounting
- ▲ Materials in the Type 310 meet NACE MR-01-75 requirements



Instrument Air Filter & Air Filter Regulator

Flow Capacity SCFM (NI/min)	22 (660)
Exhaust Capacity SCFM (NI/min)	0.1 (3)
Sensitivity Inch wc (mm)	1.0 (25.0)
Supply Pressure Max PSIG (BAR)	250 (17)

Type 300 & Type 310 Filter Regulators

Approximate Size (inches)	3.13 x 3.13 x 7.50
Approximate Size (mm)	80 x 80 x 190

Type 320 Filter

Approximate Size (inches)	3.13 x 3.13 x 3.96
Approximate Size (mm)	80 x 80 x 100

Type 300

Range PSIG (BAR)	Port Size NPT	Model#
0-10 (0-0.7)	1/4	300-BD
0-30 (0-2)	1/4	300-BA
0-60 (0-4)	1/4	300-BB
0-120 (0-8)	1/4	300-BC

Type 310 NACE Compliant

Range PSIG (BAR)	Port Size NPT	Model#
0-30 (0-2)	1/4	310-BA
0-60 (0-4)	1/4	310-BB
0-100 (0-7)	1/4	310-BC

Type 330

Provides clean, accurate air pressure in a durable, compact housing. For long lasting corrosion resistance in harsh industrial environments.

- ▲ Second Gauge Port Option
- ▲ Direct, Pipe or Bracket Mounting
- ▲ Low Air Consumption
- ▲ Tapped Exhaust and Panel Mount Options



Instrument Air Filter Regulator

Flow Capacity SCFM (NI/min)	22 (660)
Exhaust Capacity SCFM (NI/min)	0.1 (3)
Sensitivity Inch wc (mm)	1.0 (25.0)
Supply Pressure Max PSIG (BAR)	250 (17)
Approximate Size (inches)	3.42 x 2.56 x 3.10

Range PSIG (BAR)	Port Size NPT	Model#
0-30 (0-2)	1/4	330-BA
0-60 (0-4)	1/4	330-BB
0-120 (0-8)	1/4	330-BC

Type 350/360/370SS

Designed to provide instrument quality air in corrosive environments. Will also provide precise pressure control of sour gases.

- ▲ 316 Stainless Steel Internal and External
- ▲ Viton® Seals
- ▲ NACE approved
- ▲ Large flow capacity
- ▲ Low air consumption
- ▲ Tapped exhaust



Stainless Steel Filter Regulator, Regulator & Filter

Maximum Flow Capacity SCFM (NI/min)	20 (600)
1/4" NPT	160 (4,800)
1/2" NPT	
Exhaust Capacity SCFM (NI/min)	1.0 (30)
Sensitivity Inch wc (mm)	1.0 (25.0)
Supply Pressure Max PSIG (BAR)	290 (20)

Type 350SS Filter Regulator

1/4" NPT Approx. Size (inches)	2.13 x 2.13 x 8.11
1/4" NPT Approx. Size (mm)	54.1 x 54.1 x 206
1/2" NPT Approx. Size (inches)	2.13 x 2.72 x 8.52
1/2" NPT Approx. Size (mm)	54.1 x 69.1 x 216.4

Type 360SS Regulator

Approximate Size (inches)	2.13 x 2.13 x 5.49
Approximate Size (mm)	54.1 x 54.1 x 139.8

Type 350SS Filter Regulator

Range PSIG (BAR)	Port Size NPT	Model#
0-30 (0-2)	1/4	350-BA
	1/2	350-DA
0-60 (0-4)	1/4	350-BB
	1/2	350-DB
0-100 (0-7)	1/4	350-BC
	1/2	350-DC
0-150 (0-10)	1/4	350-BD
	1/2	350-DD

Type 360SS Regulator

Range PSIG (BAR)	Port Size NPT	Model#
0-30 (0-2)	1/4	360-BA
	1/2	360-DA
0-60 (0-4)	1/4	360-BB
	1/2	360-DB
0-100 (0-7)	1/4	360-BC
	1/2	360-DC
0-150 (0-10)	1/4	360-BD
	1/2	360-DD

Type 370SS Filter

	Port Size NPT	Model#
	1/4	370-BX
	1/2	370-DX

Type 400

General purpose regulator provides reliable performance under variable operating conditions.

- ▲ Repeatable pressure output
- ▲ Corrosion-resistant construction
- ▲ Low cost makes this unit ideal for high volume OEM applications



General Service Pressure Regulator

Flow Capacity SCFM (NI/min)	20 (600)
Exhaust Capacity SCFM (NI/min)	0.1 (3)
Sensitivity Inch wc (mm)	1.0 (25.0)
Supply Pressure Max PSIG (BAR)	250 (17)
Approximate Size (inches)	DIA 2.5 H 5.63
Approximate Size (mm)	DIA 63 H 143

Range PSIG (BAR)	Port Size NPT	Model#
0-10 (0-0.7)	1/4	400-BD
0-30 (0-2)	1/4	400-BA
0-60 (0-4)	1/4	400-BB
0-120 (0-8)	1/4	400-BC

Type 3500

General purpose regulator provides reliable performance under variable operating conditions.

- ▲ Repeatable pressure output
- ▲ Corrosion-resistant construction
- ▲ Low cost makes this unit ideal for high volume OEM applications



High Pressure Regulator

Supply Pressure Max PSIG (BAR)	6000 (413)
Temperature Range	-70° to 225° F
Approximate Size (inches)	DIA 3.35 H 6.26
Approximate Size (mm)	DIA 85.1 H 159

Range PSIG (BAR)	Port Size NPT	Adjustment	Model#
0-125 (0-9)	1/4	socket	3500-BC
0-150 (0-10)	1/4	socket	3500-BD
0-225 (0-16)	1/4	socket	3500-BE
0-125 (0-9)	1/4	Tee Handle	3500-CC
0-150 (0-10)	1/4	Tee Handle	3500-CD
0-225 (0-16)	1/4	Tee Handle	3500-CE

Type 700

Ideal for applications that require high flow capacity and accurate pressure control.

- ▲ Allows flow capacity up to 80 SCFM
- ▲ Dampening action of aspirator tube provides stability under varying flow conditions
- ▲ Sensitive to minute changes in down stream pressure



Precision High Flow Pressure Regulator

Flow Capacity SCFM (NI/min)	80 (2,400)
Exhaust Capacity SCFM (NI/min)	4 (120)
Sensitivity Inch wc (mm)	0.25 (6.4)
Supply Pressure Max PSIG (BAR)	250 (17)
Approximate Size (inches)	DIA 3.0 H 6.0
Approximate Size (mm)	DIA 76 H 152

Range PSIG (BAR)	Port Size NPT	Model#
0-2 (0-0.14)	1/4, 3/8, 1/2	700-BA, 700-CA, 700-DA
0-15 (0-1)	1/4, 3/8, 1/2	700-BC, 700-CC, 700-DC
0-30 (0-2)	1/4, 3/8, 1/2	700-BD, 700-CD, 700-DD
0-60 (0-4)	1/4, 3/8, 1/2	700-BE, 700-CE, 700-DE
0-150 (0-10)	1/4, 3/8, 1/2	700-BF, 700-CF, 700-DF

Type 700BP

Provides sensitive protection against over pressurization in the downstream portion of a pneumatic system.

- Operates as a high precision relief valve with an adjustable set point.
- ▲ Provides quick response to controlled system pressure variation
 - ▲ Flow capacity up to 50 SCFM
 - ▲ Compensating flow control from venturi tube design



Precision Back Pressure Regulator

Flow Capacity SCFM (NI/min)	50 (1,500)
Sensitivity Inch wc (mm)	0.25 (6.4)
Supply Pressure Max PSIG (BAR)	250 (17)
Approximate Size (inches)	DIA 3.0 H 6.0
Approximate Size (mm)	DIA 76 H 152

Range PSIG (BAR)	Port Size NPT	Model#
0-2 (0-0.14)	1/4, 3/8, 1/2	710-BA, 710-CA, 710-DA
0-15 (0-1)	1/4, 3/8, 1/2	710-BC, 710-CC, 710-DC
0-30 (0-2)	1/4, 3/8, 1/2	710-BD, 710-CD, 710-DD
0-60 (0-4)	1/4, 3/8, 1/2	710-BE, 710-CE, 710-DE
0-150 (0-10)	1/4, 3/8, 1/2	710-BF, 710-CF, 710-DF

Type 800

Compact unit that supplies precise air pressure regulation for applications where space is limited.

- ▲ Flow capacity up to 5 SCFM
- ▲ Stable output
- ▲ Repeatable
- ▲ Self relieving
- ▲ Lightweight construction
- ▲ Viton® elastomers



Subminiature Precision Air Pressure Regulator

Flow Capacity SCFM (NI/min)	5 (150)
Exhaust Capacity SCFM (NI/min)	0.4 (12)
Supply Pressure Max PSIG (BAR)	250 (17)
Approximate Size (inches)	DIA 1.0 H 3.4
Approximate Size (mm)	DIA 24.5 H 86.4

Range PSIG (BAR)	Port Size		
	1/16 NPT	10-32	M5
0-5 (0-0.4)	800-AA	800-CA	800-BA
0-15 (0-1)	800-AB	800-CB	800-BB
0-30 (0-2)	800-AC	800-CC	800-BC
0-60 (0-4)	800-AD	800-CD	800-BD
0-100 (0-7)	800-AE	800-CE	800-BE

Type 850/860

Air/Water regulator provides stable output pressure in a small, economical package.

- ▲ Relieving and non-relieving models
- ▲ Non-rising adjustment knob with locking capability
- ▲ Lightweight construction
- ▲ OEM friendly cost



Low Cost Miniature Air/Water Pressure Regulator

Flow Capacity SCFM (NI/min) [gal/min]	24 (720) [2.4]
T850 Exhaust Capacity SCFM (NI/min)	.5 (15)
T850 Supply Pressure Max PSIG (BAR)	250 (17)
T860 Supply Pressure Max PSIG (BAR)	150 (10)
Approximate Size (inches)	1.5 x 1.63 x 2.80
Approximate Size (mm)	38.1 x 41.4 x 71.1

Range PSIG (BAR)	Port Size NPT	Air Model#	Water Model#
0-5 (0-0.4)	1/8	850-AE	860-AEN
	1/4	850-BE	860-BEN
0-15 (0-1)	1/8	850-AA	860-AAN
	1/4	850-BA	860-BAN
0-30 (0-2)	1/8	850-AB	860-ABN
	1/4	850-BB	860-BBN
0-60 (0-4)	1/8	850-AC	860-ACN
	1/4	850-BC	860-BCN
0-100 (0-7)	1/8	850-AD	860-ADN
	1/4	850-BD	860-BDN

Type 500X

This electronic pressure regulator converts a current or voltage input signal to a linearly proportional pneumatic output pressure.

- ▲ Output pressure from 3-15 psig to 3-120 psig
- ▲ NEMA-4X (IP65) Enclosure (optional)
- ▲ Integral volume booster
- ▲ Agency approvals
- ▲ Field reversible
- ▲ Easy span and zero adjustment



Also Available:

Type 500X High Pressure Range	
Flow Capacity SCFM (NI/min)	20 (600)
Terminal Based Linearity (% of span)	±1.5
Supply Pressure Max PSIG (BAR)	150 (10)

Input Signal	Output Range PSI (BAR)	Model#
4-20 mA	2-60 (0.14-4)	500-AG
4-20 mA	3-120 (0.2-8)	500-AH
0-60 mA	2-120 (0.14-8)	500-BF
0-5 V	2-60 (0.14-4)	500-CF
0-10 V	3-120 (0.2-8)	500-EH

Transducer (I/P, E/P)

Flow Capacity SCFM (NI/min)	12.0 (360)
Terminal Based Linearity (% of span)	±0.75
Repeatability (% of span)	<0.5
Supply Pressure Max PSIG (BAR)	100 (7)
Port Size (Pneumatic)	1/4 NPT
Port Size (Electric)	1/2 NPT
Approximate Size (inches)	2.18 x 2.18 x 4.24
Approximate Size (mm)	55.4 x 55.4 x 107.7

Input Signal	Output Range PSI (BAR)	Model#
4-20 mA	3-15 (0.2-1)	500-AC
4-20 mA	3-27 (0.2-1.8)	500-AD
4-20 mA	6-30 (0.4-2)	500-AE
4-20 mA	1-17 (0.07-1.2)	500-AF
10-50 mA	3-15 (0.2-1)	500-BC
10-50 mA	3-27 (0.2-1.8)	500-BD
10-50 mA	6-30 (0.4-2)	500-BE
0-5 V	3-15 (0.2-1)	500-CC
0-5 V	3-27 (0.2-1.8)	500-CD
0-5 V	6-30 (0.4-2)	500-CE
1-9 V	3-15 (0.2-1)	500-DC
1-9 V	3-27 (0.2-1.8)	500-DD
1-9 V	6-30 (0.4-2)	500-DE



Type 550X

This electronic regulator provides accurate and economic control for proportional pressure applications.

- ▲ Compact size, accessible porting and easy adjustments for space constrained applications
- ▲ DIN rail, manifold, pipe, wall or panel mounting available
- ▲ NEMA 4X / IP65 housing
- ▲ DIN 43650, terminal block or conduit electrical connections
- ▲ Zero based and high pressure versions available



Transducer (I/P, E/P)

Flow Capacity SCFM (NI/min)	12.0 (360)
Linearity (Independent) % of span	<±0.5
Repeatability % of span	<0.5
Supply Pressure Max PSIG (BAR)	100 (7)
Port Size (Pneumatic)	1/4 NPT
Approximate Size (inches)	1.5 x 2.2 x 3.7
Approximate Size (mm)	38.1 x 55.4 x 93.7
Input Signal	4-20mA, 0-10 VDC
Output Ranges PSI (BAR)	3-15 (0.2-1), 3-27 (0.2-1.8), 6-30 (0.4-2), 2-60 (0.14-4), 3-120 (0.2-8)

Call for other options.

Also Available:

Type 550X Zero Based Range	
Max. Flow Capacity SCFM (NI/min)	20 (600)
Linearity (Independent) % of span	<±1.0
Repeatability % of span	<1.0
Supply Pressure Max PSIG (BAR)	150 (10)
Port Size (Pneumatic)	1/4 NPT
Approximate Size (inches)	1.5 x 2.2 x 5.1
Approximate Size (mm)	38.1 x 55.4 x 130
Input Signals	4-20 mA, 0-10 VDC
Output Ranges PSI (BAR)	0-30 (0-2), 0-60 (0-4), 0-120 (0-8)

Call for other options.



Type 5500



Multi-station Digital to Pneumatic Pressure Regulator

This multi-station manifold uses a common air supply to provide electronic proportional control of output pressure through the use of a DeviceNet™ or Profibus™ communication network.

- ▲ 4, 6, or 8 station air pressure control from one fieldbus node
- ▲ Easy commissioning and reduced system wiring
- ▲ Individual shut-off valve for each station
- ▲ Optional diagnostic feedback of output pressure
- ▲ Common air supply simplifies piping
- ▲ Compact design ideal for high-density mounting.

Type 590X

I/P transducer uses open loop control and a low mass magnet to produce accurate pressure control at an economical cost. Position insensitive and impervious to RFI/EMI interference.

- ▲ Vibration and Position Insensitive
- ▲ Din Rail and Manifold Mounting
- ▲ Manifold or 1/8" NPT Porting Available
- ▲ Wide Operating Temperature Limits
- ▲ Worldwide Safety Approvals



Transducer (I/P)

Terminal Based Linearity (% of span)	±0.5
Supply Pressure Max PSIG (BAR)	
Manifold (M)	150 (10.0)
1/8" NPT (P)	3-15: 22 (1.5) 3-27, 6-30: 42 (2.8)
Approximate Size (inches)	3.3 x 1.4 x 2.0
Approximate Size (mm)	84.9 x 36.1 x 53.1

Input Signal	Output Range PSI (BAR)	Connection	Model #
4-20 mA	3-15 (0.2-1)	Manifold	590-ACM
4-20 mA	3-27 (0.2-1.8)	Manifold	590-ADM
4-20 mA	6-30 (0.4-2)	Manifold	590-AEM
4-20 mA	3-15 (0.2-1)	1/8" NPT	590-ACP
4-20 mA	3-27 (0.2-1.8)	1/8" NPT	590-ADP
4-20 mA	6-30 (0.4-2)	1/8" NPT	590-AEP



Type 595XP

Converts a 4–20mA electrical current signal to a proportionally linear pneumatic output utilizing open loop control to provide a high level of accuracy and repeatability. Available with an integral volume booster or as a low-flow signal converter.

- ▲ Compact Design
- ▲ Worldwide Safety Approvals
- ▲ Vibration and Position Insensitive
- ▲ Low power consumption



Explosion-Proof Transducer (I/P)

Flow Capacity SCFM (NI/min)	2.4 (72)
Terminal Based Linearity (% of span)	±0.5
Repeatability (% of span)	<0.3
Supply Pressure Max PSIG (BAR)	42 (2.8)
Port Size (Pneumatic)	1/4 NPT
Port Size (Electric)	1/2 NPT
Approximate Size (inches)	DIA 2.90 H 5.16
Approximate Size (mm)	DIA 73.7 H 131.0

Input Signal	Output Range PSI (BAR)	Model#
4-20 mA	3-15 (0.2-1)	595-AC
4-20 mA	3-27 (0.2-1.8)	595-AD
4-20 mA	6-30 (0.4-2)	595-AC



Type 900X

Internal feedback system provides accurate conversion of a variable electrical signal to a linearly proportional pneumatic output.

- ▲ Unit self-corrects to maintain precise control of output pressure
- ▲ Shock, vibration and position insensitive
- ▲ High accuracy
- ▲ Noninteractive zero and span
- ▲ NEMA-4X(IP65) Enclosure
- ▲ Supply pressures up to 130 PSIG
- ▲ Built-in volume booster
- ▲ Wall, panel, pipe, DIN rail (optional) or manifold mounting
- ▲ Direct / reverse acting, full / split range



Transducer (I/P, E/P)

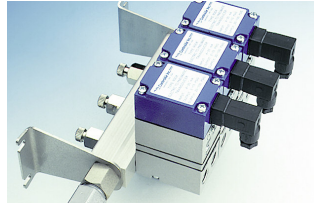
Flow Capacity SCFM (NI/min)	12.0 (360)
Terminal Based Linearity (% of span)	±0.10
Repeatability (% of span)	<0.10
Supply Pressure Max PSIG (BAR)	100 (7)
Port Size (Pneumatic)	1/4 NPT
Port Size (Electric)	1/2 NPT
Approximate Size (inches)	1.5 x 2.2 x 3.7
Approximate Size (mm)	38.1 x 55.9 x 93.7

Input Signal	Output Range PSI (BAR)	Model#
4-20 mA	3-15 (0.2-1)	900-ACA
4-20 mA	3-27 (0.2-1.8)	900-ADA
4-20 mA	6-30 (0.4-2)	900-AEA
4-20 mA	1-17 (0.07-1.2)	900-AFA
4-20 mA	2-60 (0.14-4)	900-AGA
4-20 mA	2-100 (0.14-7)	900-AHA
0-5 V	3-15 (0.2-1)	900-CCA
0-5 V	3-27 (0.2-1.8)	900-CDA
0-5 V	6-30 (0.4-2)	900-CEA
0-10 V	3-15 (0.2-1)	900-ECA
0-10 V	3-27 (0.2-1.8)	900-EDA
0-10 V	2-60 (0.14-4)	900-EGA
0-10 V	2-100 (0.14-7)	900-EHA

Now Available: Zero Based Outputs 0-15, 0-30 & 0-60 psi



Type 925



Multi-Function Supply Manifold

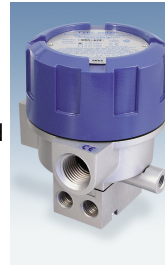
Provides a common supply port for the Type 550 or Type 900X I/P, E/P. Individual shut-offs allow in use service.

- ▲ One supply line for multiple outlets
- ▲ Patented individual shut-off valve
- ▲ DIN rail mountable
- ▲ Easy set-up
- ▲ Adaptable to provide common output for solenoid valves

Type 950XP

Compact I/P transducer in an explosion-proof housing delivers reliable performance in hazardous areas. Internal electronic feedback system maintains accurate control of output pressure.

- ▲ Explosion-proof NEMA-4X(IP65) enclosure.
- ▲ RFI, EMI protected
- ▲ Shock, vibration and position insensitive.
- ▲ Field-selectable outputs (optional)
- ▲ Highly tolerant of impure air
- ▲ Optional tapped exhaust and conduit seal required for FM/CSA approval when using natural gas (sweet) or methane



Explosion-Proof Transducer (I/P)

Flow Capacity SCFM (NI/min)	12.0 (360)
Terminal Based Linearity (% of span)	±0.10
Repeatability (% of span)	<0.10
Supply Pressure Max PSIG (BAR)	100 (7)
Port Size (Pneumatic)	1/4 NPT
Port Size (Electric)	1/2 NPT
Approximate Size (inches)	DIA 3.50 H 4.60
Approximate Size (mm)	DIA 88.9 H 116.6

Input Signal	Output Range PSI (BAR)	Model#
4-20 mA	3-15 (0.2-1)	950-AC
4-20 mA	3-27 (0.2-1.8)	950-AD
4-20 mA	6-30 (0.4-2)	950-AE
4-20 mA	Field Selectable	950-ACA



P200/P290M

All solid state circuitry converts standard 3-15, 3-27 or 6-30 psig instrument air into 4-20 or 10-50 mA outputs (4-20 mA only for FM and CSA approval) with uncompromising accuracy and durability. The P200 is FM approved and CSA certified as NEMA 4 (Enc. 4) for all locations and explosion-proof.

- ▲ ±0.15% accuracy
- ▲ Custom inputs up to 50 PSI



Pneumatic-to-Current P/I Transducers

Dahl P200 | Dahl P290

Inputs	Dahl P200	Dahl P290
Inputs	3-15 psig (0.2-1 BAR), 3-27 psig (0.2-1.8 BAR), 6-30 psig (0.4-2 BAR) or customized up to 0-30 psig (0-2 BAR)	3-15 psig (0.2-1 BAR), 3-27 psig (0.2-1.8 BAR), 6-30 psig (0.4-2 BAR) or customized up to 0-30 psig (0-2 BAR)
Outputs	2 wire: 4-20 mA and 10-50 mA with over-current limit	2 wire: 4-20 mA, with over-current limit
Loads (24 VDC)	700 Ω	2-wire: 700 Ω, standard.
Accuracy	± 0.15% of span guaranteed; ±0.10% of span typical. Includes combined effects of linearity, hysteresis and repeatability errors	
Temp. Stability	Span and zero: ± 0.007% of span per °F maximum deviation from 77 °F calibration	
Approx. Size (inches)	3.5 x 3.125	.75 x 3.43 x 5.37

Input Signal PSI (BAR)	Output Range	Model #
3-15 (0.2-1)	4-20 mA	P200 + P11
3-27 (0.2-1.8)	4-20 mA	P200 + P12
6-30 (0.4-2)	4-20 mA	P200 + P13
3-15 (0.2-1)	4-20 mA	P290M + P11
3-27 (0.2-1.8)	4-20 mA	P290M + P12
6-30 (0.4-2)	4-20 mA	P290M + P13

L100

Bubble Tube Liquid Level System

Fully self-contained bubble-tube level system requires only connections to air or gas supply, dip tube and electrical power source to provide precise level indication.

- ▲ High accuracy and stability
- ▲ Visual purge rate indication
- ▲ Blow-down capability
- ▲ Excellent for hazardous, high-temp., corrosive or waste water
- ▲ NEMA 4X enclosures available



Description	Model#
Basic System	L100
Remote Sensing	L100R
Automatic Blow-Down	L100A
Remote Sensing & Automatic Blow-Down	L100AR

Volume Boosters/Air Relays

Type 200

Pilot operated, multi-stage 1:1 relay with positive and negative biasing adjustment capability. It accurately and quickly reproduces a signal pressure with consistent repeatability.

- ▲ Output control to within 0.1% of full range
- ▲ Positive or negative bias up to 30 psig
- ▲ High relief capacity model available
- ▲ Compact unit
- ▲ Available with external bias adjustment (shown)



Precision Air Relay

Flow Capacity SCFM (NI/min)	14 (420)
Exhaust Capacity SCFM (NI/min)	
Standard Relief	2.0 (60)
High Relief Capacity	10 (300)
Sensitivity Inch wc (mm)	0.125 (3.2)
Supply Pressure Max PSIG (BAR)	150 (10)
Output Pressure Range PSIG (BAR)	2-120 (0.14-8)
Approximate Size (inches)	2.06 x 2.06 x 2.88
Approximate Size (mm)	52 x 52 x 73

Port Size NPT	Max. Output Pressure	Model #
Standard Relief		
1/4	2-120 psig	200-BC
3/8	2-120 psig	200-CC
High Relief Capacity		
1/4	2-120 psig	210-BC
3/8	2-120 psig	210-CC

Type 250

Valve or damper position is maintained by capturing air pressure inside the diaphragm chamber (or piston cylinder) of the actuator, when the supply pressure falls below the desired set value.

- ▲ Two pressure ranges 15-60 psig (1-4 BAR) or 30-120 psig (2-8 BAR)
- ▲ Manual relief valve
- ▲ Corrosion-resistance construction
- ▲ Aluminum or stainless steel material option
- ▲ No leakage in lock-up position



Lock-up Air Relay

Cut-off Pressure Range PSIG (BAR)	15-60 (1-4)
Supply Pressure Max PSIG (BAR)	125 (8.35)
Temperature Limits:	0° to 160°F (-18° to 71°C)
Port Size NPT	1/4"

Set Point Range PSIG (BAR)	Part Number	Construction
15-60 (1-4)	250-AA	Aluminum
30-120 (2-8)	250-BA	Aluminum
15-60 (1-4)	250-AS	Stainless Steel
30-120 (2-8)	250-BS	Stainless Steel

Type 600

Utilizes a signal pressure to produce an output pressure with high flow capacity. Highly resistant to output variation due to changing flow and supply pressure conditions.

- ▲ Flow capacity to 50 SCFM
- ▲ Available with 1:1, 1:2, 1:3 or 1:6 signal to output ratio
- ▲ High relief capacity
- ▲ Negative bias option available



Volume Booster

Flow Capacity SCFM (NI/min)	50 (1,500)
Exhaust Capacity SCFM (NI/min)	15.0 (450)
Sensitivity Inch wc (mm)	0.25 (6.4)
Supply Pressure Max PSIG (BAR)	250 (17)
Output Pressure Range PSIG (BAR)	0-150 (0-10)
Approximate Size (inches)	DIA 3.0 H 3.5
Approximate Size (mm)	DIA 76 H 85

Port Size NPT	Signal/Output Ratio	Model #
1/4", 3/8", 1/2"	1:1	600-BA, 600-CA, 600-DA
1/4", 3/8", 1/2"	1:2	600-BB, 600-CB, 600-DB
1/4", 3/8", 1/2"	1:3	600-BC, 600-CC, 600-DC
1/4", 3/8", 1/2"	1:6	600-BD, 600-CD, 600-DD

Type 650

Signal-operated regulator provides an output pressure that is the sum of the input signal pressure plus an easily adjustable preset positive bias.

- ▲ Four bias ranges from 0-15 psig to 0-150 psig
- ▲ Flow capacity to 50 SCFM
- ▲ Relief capacity to 15 SCFM



Positive Bias Relay

Flow Capacity SCFM (NI/min)	50 (1,500)
Exhaust Capacity SCFM (NI/min)	15.0 (450)
Sensitivity Inch wc (mm)	0.25 (6.4)
Supply Pressure Max PSIG (BAR)	250 (17)
Output Pressure Range PSIG (BAR)	0-150 (0-10)
Approximate Size (inches)	DIA 3.0 H 3.5
Approximate Size (mm)	DIA 76 H 85

Port Size NPT	Signal/Output Ratio	Model #	Bias Range PSI
1/4	1:1	650-BF	0-150*
3/8	1:1	650-CF	0-150*

*Consult factory for other bias ranges and ratios.

Type 6000

1-to-1 signal to output relay that, when used with a positioner/actuator, increases speed of control valves.

- ▲ High air volume for rapid actuator stroking
- ▲ Adjustable bypass valve eliminates actuator overshoot or overdamping
- ▲ Soft seal seating for tight shutoff
- ▲ Available in aluminum or 316 stainless steel construction



Volume Booster

Supply & Signal Pressure	150 psig (10 BAR) max
Max Flow Coefficients (Cv)	Supply 3.0 / Exhaust 3.0
Flow Capacity	115 scfm (3,450 NI/min)
Deadband	Under 0.25 psig (0.017 BAR)
Signal to Output Ratio	1:1 ± 5%
Temperature Limits	-40° to 160°F (-40° to 71°C)
Signal Port	1/4" NPT
Supply/Output Port	1/2" or 3/4" NPT

Model #	In/Out Port	Construction
6000-DA	1/2" NPT	Aluminum
6000-EA	3/4" NPT	Aluminum
6000-DS	1/2" NPT	Stainless Steel
6000-ES	3/4" NPT	Stainless Steel

Mite 70

Set to trip on either an increasing or decreasing control signal, the Mite 70 will either lock-up or vent downstream pressure when tripped. The tripped position is then held indefinitely until the control signal is restored and a manual reset button is pushed.

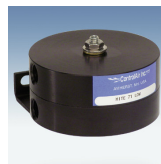


Snap-acting control relay with manual reset

Pressure Rating	100 psig max
Temperature Limits	-40°F to +180°F
Port Sizes	Tapped for 1/4" NPT with 1/8" internal parts
Materials	Aluminum, plated steel, neoprene, brass and stainless steel

Super Mite 71L/71H

Automatically selects the higher or lower of two pneumatic inputs and passes it downstream while blocking the other. Capable of almost instantaneous selection, and can separate pressure differentials as low as a tenth of a psi.



High pass or low pass pneumatic selecting relay

Pressure Rating	100 psig max
Temperature Limits	-40°F to +180°F
Port Sizes	Tapped for 1/4" NPT with 1/8" internal parts
Materials	Aluminum, plated steel, neoprene, brass and stainless steel

Mite 74

Combines the Mite 70 control relay with a precision 2-way or 3-way valve in a single compact package. Either an increasing, decreasing or remote signal can be used to channel air as needed.



Snap-acting control relay with integral 3-way valve

Pressure Rating	100 psig max
Temperature Limits	-40°F to +180°F
Port Sizes	Tapped for 1/4" NPT with 1/8" internal parts
Materials	Aluminum, plated steel, neoprene, brass and stainless steel

Diaphragm Air Cylinders

A rolling diaphragm provides a low-friction dynamic seal. This design provides virtually frictionless conversion of fluid pressure to linear force.

- ▲ Low hysteresis
- ▲ No blow-by leakage
- ▲ Available with linear ball bearings
- ▲ Standard units are easily modified to meet individual customer requirements



ControlAir delivers precision pneumatic and electropneumatic controls like no one else in the business.

We offer world-wide distribution for companies that demand excellent service and outstanding technical support.

Our ISO-9001:2000 registered quality system assures tightly controlled specifications and processes, resulting in high performance, dependable pneumatic controls.

Our dedication to a streamlined manufacturing process assures customers of product availability and on-time delivery.

ControlAir specializes in joint development projects and strategic design partnerships—customizing our products to meet the specific needs of our customers.

▲ AUTOMATED
INDUSTRIAL
EQUIPMENT

▲ PROCESS
CONTROL
SYSTEMS

▲ LABORATORY
RESEARCH
AND ANALYSIS

▲ ENERGY
MANAGEMENT

▲ FLUID POWER

▲ ROBOTICS

▲ VALVE
AUTOMATION

**Get the details on any ControlAir product—
log onto www.controlair.com**

- ▲ Browse our entire product line
- ▲ View complete specifications and performance data
- ▲ Download product specs and 2D/3D CAD models

**Or call 603/886-9400 for more information
and a full product catalog**

Distributed by:

 **ControlAir Inc.**

8 Columbia Drive / Amherst, NH 03031 USA
Website: www.controlair.com
Email: sales@controlair.com
603/886-9400 Fax: 603/889-1844

