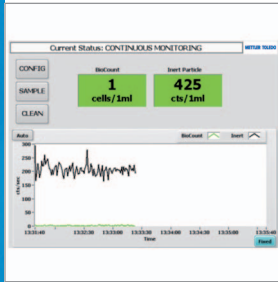
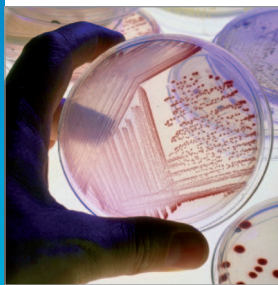


Continuous On-Line Microbial Monitoring For Pharmaceutical Waters



Instant bacterial and particle count

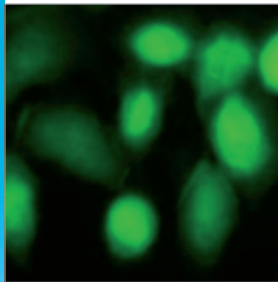
Real-time display of microbial and inert particle contamination.



Easy operation

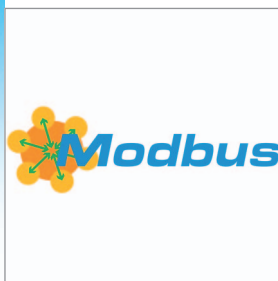
No sample preparation or reagents required.

- Touchscreen
- No moving parts



Wide measurement range

Dependable measurements from 1 cell/100 mL to 2000/mL.



Multiple communication options

SCADA connectivity with ModBus TCP, multiple analog outputs and Wi-Fi capability.



7000RMS

Real-Time Microbial Analysis

Advanced laser-based technology provides immediate detection and quantification of microorganisms; overcoming limitations of growth-based technologies that are dependent on incubation conditions, growth media, reagents and time.

Counts particles from as small as 0.52 microns and accepts direct input line temperatures of up to 90°C. The 7000RMS delivers 24/7 monitoring of water treatment, storage tanks, distribution loops, points-of-use and clean-in-place processes.

See more about the 7000RMS at:

► www.mt.com/7000RMS

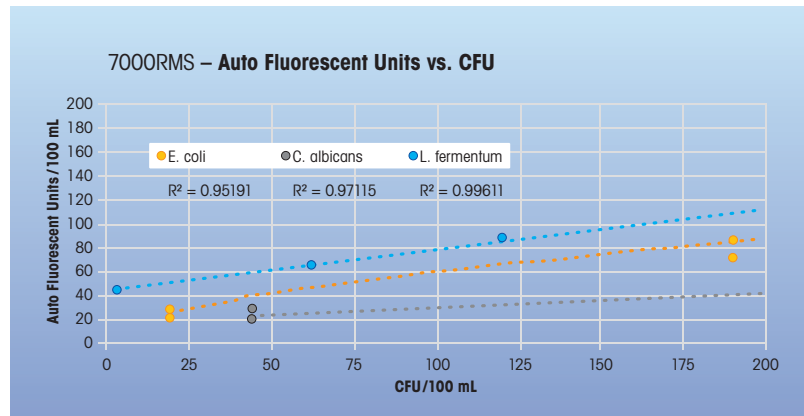
Technical data of the 7000RMS

Sample flow rate	30 mL/min
Biological detection and quantification	1 bio count
Limit of quantification	1 bio count
Dynamic range	0–2 × 10 ⁴ total counts/mL* 10 ³
Linear range	0–700 total counts/mL
Sample temperature (noncondensing)	5 ... 90 °C (41 ... 194 °F)
Operational environment (noncondensing)	Up to 50 °C (120 °F)
Online inlet pressure	2–7 bar (30–100 psig)
Data report interval	Min. 2 sec up to user-defined maximum
RMS operating software	Windows 7-based proprietary software: RMS version 3.0
Data communication	– Ethernet - standard RJ45/Wi-Fi capable – SCADA connectivity via Modbus TCP – 2 analog output channels: 4–20 mA standard, user-software with configurable output ranges
Physical dimensions (W × H × D)	56.4 × 61.6 × 30.5 cm (22.2 × 24.25 × 12")
Weight	32 kg (70 lbs)
IP rating	IP65, NEMA 4 (enclosure)
Power	90–240VAC/5A, 50–60 Hz NEMA 4/IP65 power connector Up to 15 ft (4.6 meters) SJ cord length provided standard
Maximum allowable particle size	50 µm
Monitoring location	For continuous on-line monitoring panel, wall mounting tabs kit standard

* (inert and biological)/mL

Applications

- Water for Injection
- Purified Water
- Parenteral Drug Waters
- Personal Care Products
- Cosmetics
- Food & Beverage
- Medical Implants
- Drinking Water



Correlation graph of plate count (CFUs) and 7000RMS (Auto Fluorescent Units)



Management System
certified according to
ISO 9001 / ISO 14001

Mettler-Toledo Thornton, Inc.

900 Middlesex Turnpike, Bldg. 8
Billerica, MA 01821 USA
Phone +1-781-301-8600
Fax +1-781-271-0214
Toll Free +1-800-510-PURE (US only)

Subject to technical changes
© Mettler-Toledo Thornton, Inc.
58 087 053 Rev. E 10/2015

www.mt.com

For more information